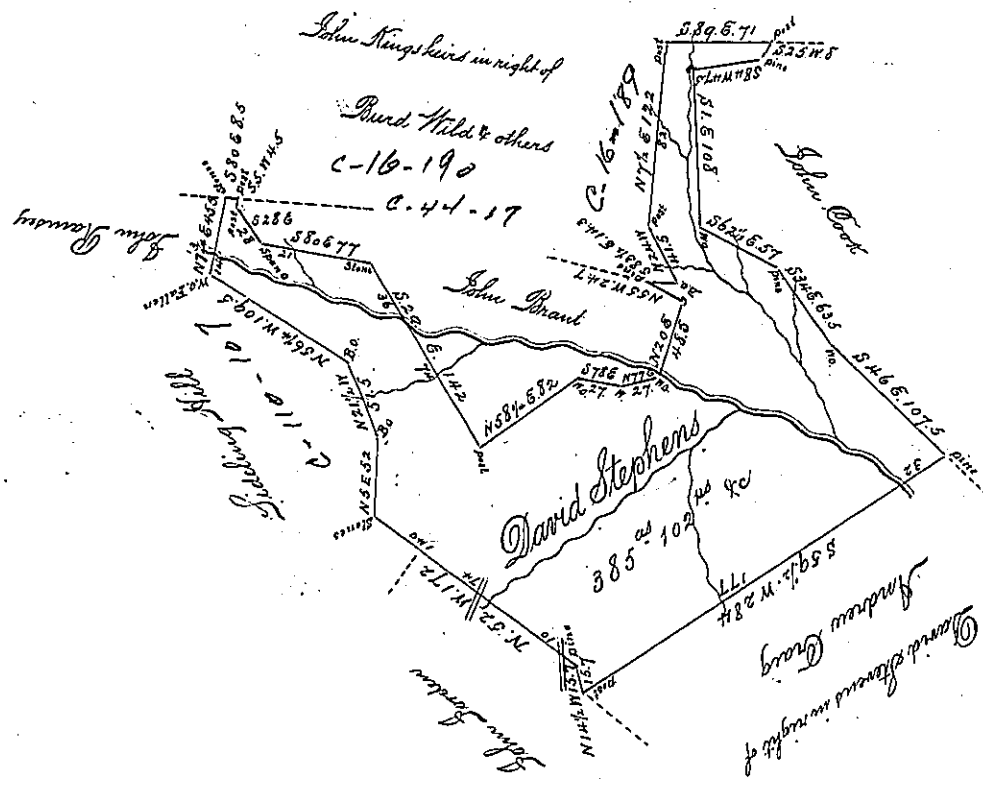


	Dist	N	S	E	W
N	7 1/2	E	45.5	11.51	6.1
S	80	E	5.5	1.5	8.4
S	5	W	4.5		14
S	28	E	28	24.7	13.1
S	80	E	77	13.4	75.8
S	29	E	142	124.2	68.8
N	58 1/2	E	82	142.1	69.7
S	78	E	27	5.6	26.4
N	77	E	27	6.1	26.3
N	20	E	48.5		16.6
N	55	W	24.7	142	20.2
S	83 1/2	E	14.3	1.6	14.2
N	24	W	41.5	37.9	16.9
N	7 1/2	E	122	120.9	15.9
S	89	E	71	1.2	71.0
S	25	W	8	7.2	3.4
S	84	W	47.5	5.0	47.2
S	7	E	108	108.0	1.9
S	62 1/2	E	57	26.3	50.6
S	34	E	63.5	52.6	35.5
S	46	E	107.5	74.7	77.3
S	59 1/2	W	28.4	144.1	244.7
N	14 1/2	W	15.2		3.9
N	52	W	17.2	105.9	135.5
N	5	E	52	51.8	4.5
N	2 1/2	W	51.5	47.9	18.9
N	56 1/2	W	109.5	60.8	91.0
			594.5	594.6	582.1
				582.1	582.1



N	7 1/2	E	45.5
S	80	E	8.5
S	5	W	4.5
S	28	E	28.0
S	80	E	77.0
S	29	E	142.0
N	58 1/2	E	82
S	78	E	27
N	77	E	27
N	20	E	48.5
N	55	W	24.7
S	83 1/2	E	14.3
N	24	W	41.5
N	7 1/2	E	122
S	89	E	71
S	25	W	8
S	84	W	47.5
S	1	E	108
S	62 1/2	E	57
S	34	E	63.5
S	46	E	107.5
S	59 1/2	W	28.4
N	14 1/2	W	15.2
N	52	W	17.2
N	5	E	52
N	2 1/2	W	51.5
N	56 1/2	W	109.5

Situation Woodenbridge creek in Dublin township Bedford County containing three hundred and eighty five acres one hundred and two perches and allowance of six per cent for Roads &c including an improvement at least 30 years old in tenure of the said David Stephens Surveyed the 14th day of May 1840 in pursuance of a warrant dated the 14th December A.D. 1839 granted to David Stephens for 350 acres

Michael Reed D.S.

To Jacob Sallade, Esq. S. G.

IN TESTIMONY that the above is a copy of the original remaining on file in the Department of Internal Affairs of Pennsylvania, made conformably to an Act of Assembly approved the 16th day of February, 1833, I have hereunto set my Hand and caused the Seal of said Department to be affixed at Harrisburg, this

fourth day of May 1897.

James W. Latta
Secretary of Internal Affairs.